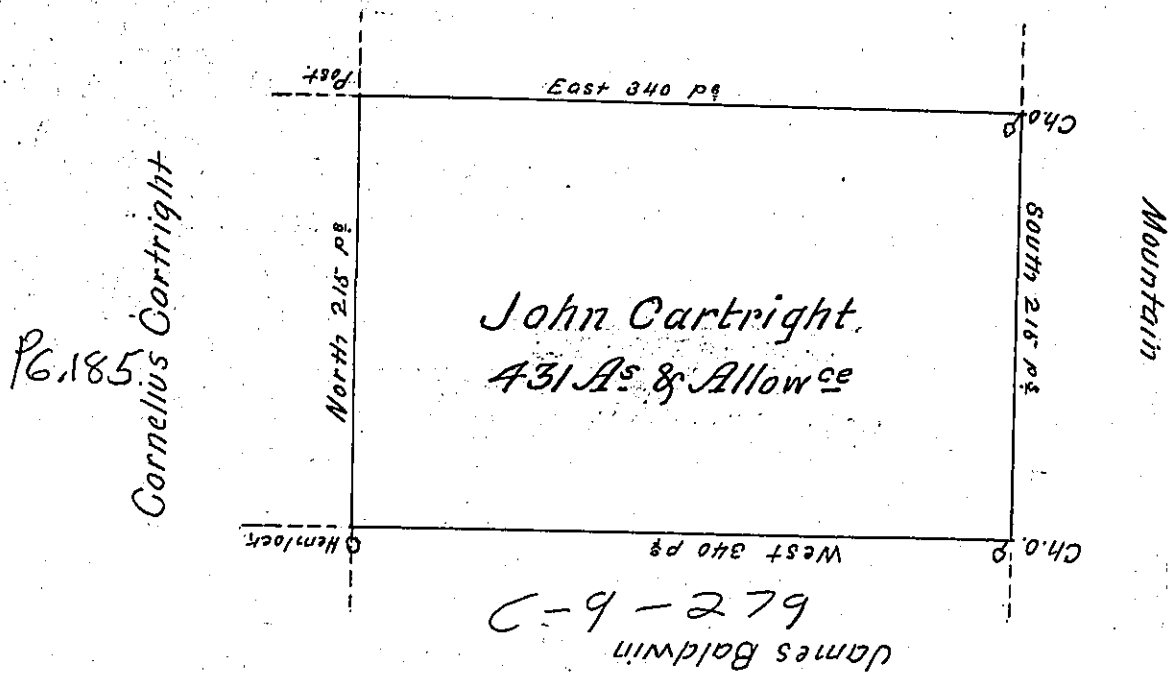


Cornelius Devenport



A Draught of a Tract of land situate in the County of Luzerne. Containing Four hundred & thirty one Acres & Allow<sup>ce</sup> of six p. C<sup>t</sup> for roads &c. Surveyed July 28<sup>th</sup> 1793 on a Warrant to John Cartright dated the 13. August 1792. Taken from the field Notes of Joseph J. Wallis then Deputy Surveyor.

Samuel Cochran  
 To ~~Ben<sup>t</sup> Brodhead~~ Esq  
 Surveyor General -

certified by me this 21<sup>st</sup> Day of January 1802

The Samborn Dy. Sr

certified this 8<sup>th</sup> feby 1802 by

The Samborn

Dy. Sr.

IN TESTIMONY that the above is a copy of the original remaining on file in the Department of Internal Affairs of Pennsylvania, made conformably to an Act of Assembly approved the 16th day of February, 1833, I have hereunto set my Hand and caused the Seal of said Department to be affixed at Harrisburg, this seventeenth day of March 1904.

*Isaac P. Brown*  
 Secretary of Internal Affairs.